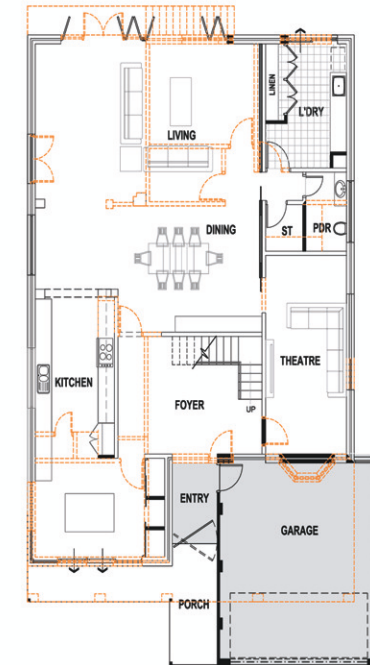




# 13 BEACH RD MARMION

DATE: SEPTEMBER 2009  
CLIENT: HEPBURN / MARK & MANDY  
BUILDER: HALLMARK DEVELOPMENTS  
STATUS: COMPLETED



FIRST FLOOR

GROUND FLOOR

With three rapidly growing children, the owners of this original 3\*2 required a modern home with each bedroom having its own ensuite or at least a "Jack & Jill bathroom". The parents requested a luxurious master bedroom with ensuite capturing un-interrupted view of Rottnest Island. To achieve the new build, the home underwent major structural alterations. The internal walls were removed to create an open plan living and a double garage and portfolio were constructed on the ground floor. To gain the extra space required the upper floor was rebuilt and extended with a spacious 120 square metre addition. The final product was a luxurious and spacious modern family home finished with high quality products to ensure the building will remain modern for years to come.



BEFORE



AFTER